



## MAX708 /MAX709 User Manual

Read entire instruction guide before starting installation.

### System Overview

The phone security solution of MAX is well designed based on classical standalone display solutions. It adopts the most advanced technology and has reliable standard security. All its highlights create a wonderful consumer experience, increase sales and prevent theft.

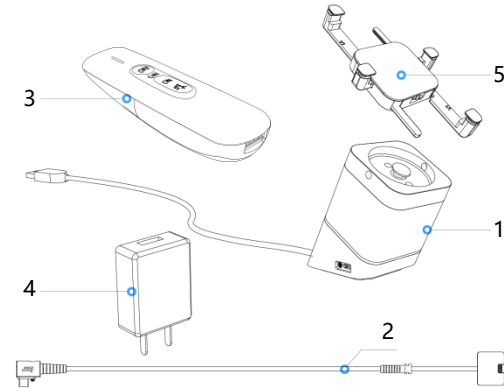
### Status

1. System will be activate when connect to power source.
2. Turn off system: remove power supply and merchandise, disarm alarm by remote.
3. LED indicator: "Blue" is "on-guard" , "Red" is "alarming"

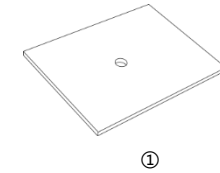


### System Components

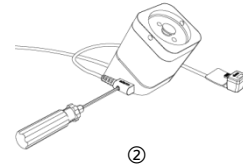
1. Stand with Power Cord
2. Charging Cable
3. Remote Control (optional)
4. Adapter (5.5V, 2A)
5. Bracket



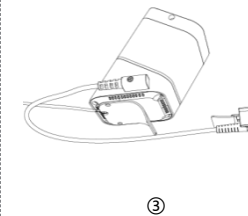
### INSTALLATION STEPS



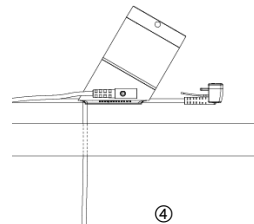
Drill a 20mm diameter hole in display counter and wipe it clean.



Plug micro-USB connector of charging and alarming cable into alarming base port and tighten screws.

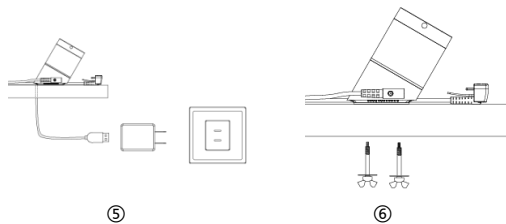


Remove clear film off 3M adhesive on alarming base.



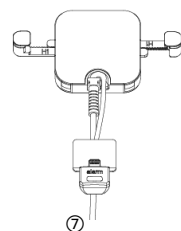
Slide power cable through display counter (optional). Press security stand firmly for at least 10 seconds.

### INSTALLATION STEPS

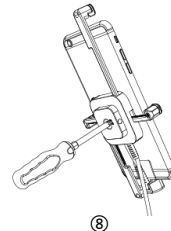


Plug adapter into power cable and outlet.

(Optional) Tighten wingnuts below counter.

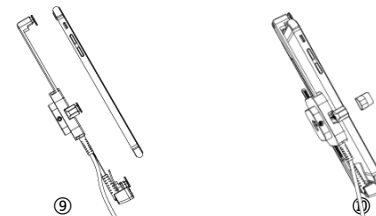


Measure a proper length for charging cable on merchandise and plug charging cable into the gap of bracket.



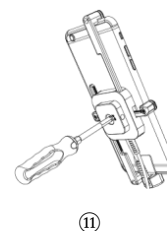
Turning screw on the bottom of bracket holder from "lock" to "unlock" , insert all arms.

### INSTALLATION STEPS

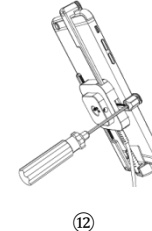


Plug merchandise on charging connector; Remove clear film off 3M adhesive and center it on the back of merchandise.

(Optional) Put the silicone cover on bracket arms to protect the phone.

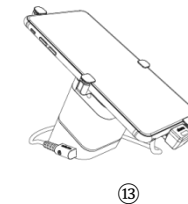


Adjust a proper length for bracket's arms according to merchandise; turning the bottom screw to "lock" .

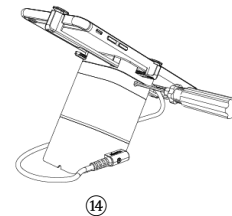


Adjust a proper thickness for bracket's arms according to merchandise.

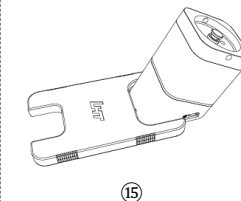
### INSTALLATION STEPS



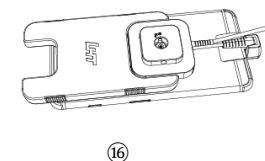
Installation finished.



(Optional) lock down the brackets by tighten screws on left and right side of security stand.



(Optional) Plug the bigger gap of 3M adhesive remover into security base and turn 90° to remove 3M adhesive.



(Optional) Loosen screws, remove arms off bracket holder; Plug bigger gap of adhesive remover into holder and turn 90° to remove 3M adhesive.

Hangzhou Langhong Technology Co., Ltd.

Service hotline: 400-007-0201

Email : intlservice@hzglanghong.com

Website: <http://www.showhiglobal.com>

Address: 19F of CHNT, Building 1, No. 560, Yueming RD,  
Binjiang District, Hangzhou, Zhejiang, China 310052